

Illuminated pushbutton, connector M12, Ø 22 mm, stainless steel 316L, cable 200 mm, 180°

82-665A.1124



<https://www.eao.com/p/82-665A.1124>

Your product:



82-665A.1124  
Illuminated pushbutton, connector M12,  
Ø 22 mm, stainless steel 316L, cable  
200 mm, 180°

**FRONT**

Front dimension:	Ø 25 mm
Front form:	Round
Front bezel material:	Stainless steel 316L
Front bezel shape:	Flush

**MOUNTING**

Mounting cut-out:	Ø 22 mm
Mounting type:	Panel mounting

**OPERATING-/INDICATION PART**

Lens colour:	Silver
Lens material:	Stainless steel 316L
Lens illumination:	Illuminated
Lens shape:	Flush
Lens optics:	opaque
Illumination colour:	Blue
Shape of illumination:	Ring (Tritan)

**ELECTRICAL CHARACTERISTICS**

Switching voltage and switching current:	according to UL 508 (Silver contacts)	
	cosφ 0,75 ... 0,8	
	Voltage	Current
	120 VAC	5 A
	240 VAC	3 A
	24 VAC	1 A

according to IEC 60947-5-1 (Silver contacts)	
Service categorie AC-15	
Voltage	Current
24 VAC	1 A
35 VAC	1 A (M12 version)
110 VAC	1 A
220 VAC	0.5 A
Switch rating DC service categorie DC-13 (Silver contacts)	
Voltage	Current
24 VDC	0.7 A
35 VDC	0.5 A (M12 version)
110 VDC	0.2 A
220 VDC	0.1 A

<b>Operating voltage:</b>	24 V DC (LED)
<b>Rated Operational Voltage Ue:</b>	250 VAC
<b>Rated insulation voltage Ui:</b>	250 V
<b>Switching rating:</b>	35 V AC/DC @ 0,6 A
<b>Electrical lifetime:</b>	50 000 cycles of operation
<b>Electric strength:</b>	1500 VAC, 50 Hz 1 minute between life terminals and ground
<b>Pollution degree:</b>	2, according to EN IEC 60947-1
<b>Thermal current Ith:</b>	5 A

## MECHANICAL CHARACTERISTICS

<b>Terminal:</b>	Cable 200 mm, 180°, Connector M12
<b>Switching action:</b>	Momentary
<b>Switching system:</b>	Snap-action switching element
<b>Mechanical lifetime:</b>	1 Mil. cycles of operation
<b>Operating force:</b>	4 N ... 7 N
<b>Operating Travel:</b>	ca. 3 mm
<b>Tightening torque:</b>	0.5 ... 0.6 Nm
<b>Weight:</b>	0.026 kg

## AMBIENT CONDITION

<b>IP front protection:</b>	IP65, IP67
<b>Operating temperature:</b>	– 30 °C ... + 70 °C
<b>Storage temperature:</b>	– 40 °C ... + 80 °C
<b>Shock resistance:</b>	Max. 500 m / s <sup>2</sup> as per IEC 60068-2-27
<b>Vibration resistance:</b>	10 ... 500 Hz, amplitude 1.5 mm p-p according to IEC 60068-2-6

**Climate resistance:**

Damp heat, 21 days according to IEC 60512-11

**CERTIFICATE****Conformities:**

CE, 2011 / 65 / EC (RoHS), 2014 / 35 / EU (LVD)

**REACH:**

REACH compliant

**RoHS:**

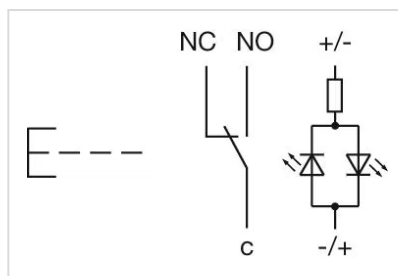
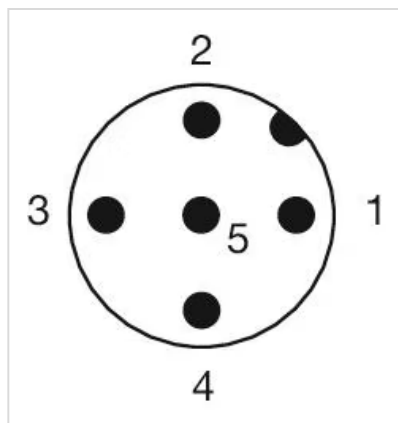
RoHS compliant

**OTHER****Short Description:**

Illuminated pushbutton, connector M12, Ø 22 mm, stainless steel 316L, cable 200 mm, 180°, Momentary, 35 V AC/DC @ 0,6 A, 24 V DC (LED), Cable 200 mm, 180°, Connector M12, Round, Stainless steel 316L, Blue, Silver

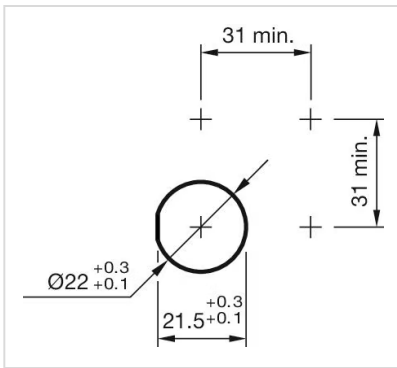
**Kind of illumination:**

Single-LED

**Wiring diagrams:****Component layouts:**

1 = NC  
2 = LED+  
3 = Common  
4 = LED-  
5 = NO  
A-Coded

**Mounting cut-outs:**



**Dimension drawings:**

