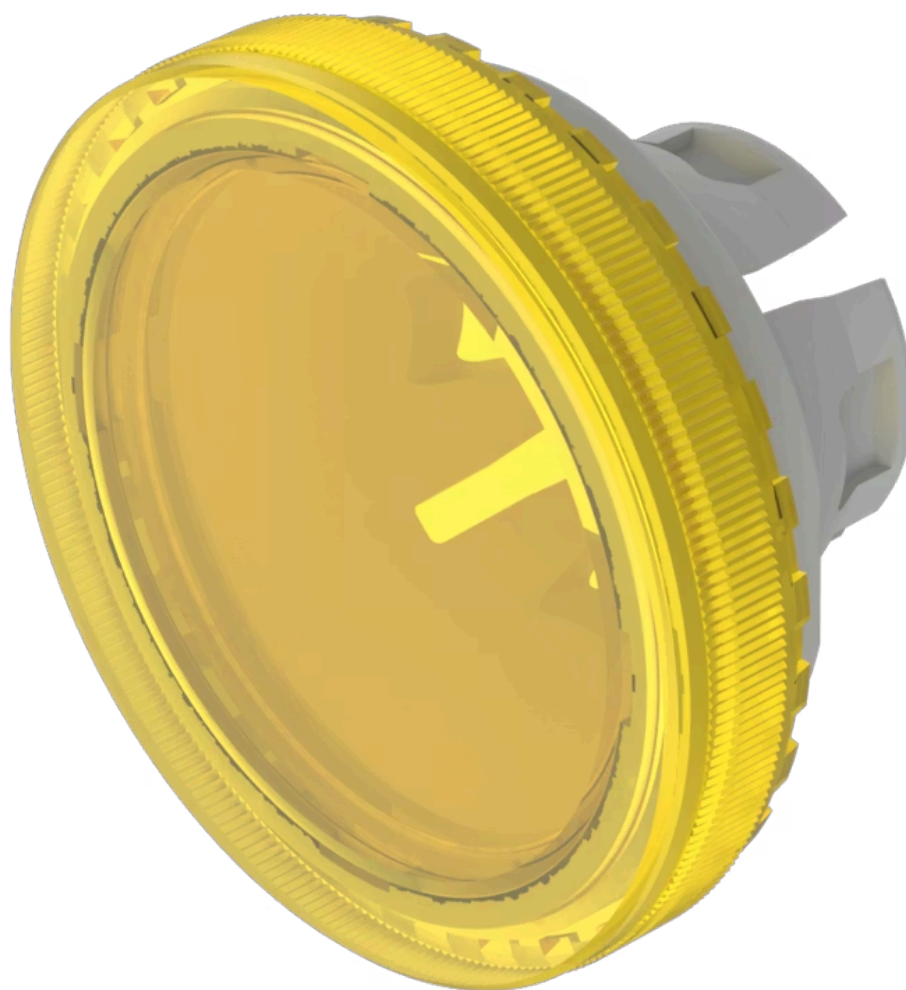


Lens

84-
7115.400



<https://www.eao.com/component/84-7115.400/en/...>

Your product:



84-7115.400 Lens

FRONT

Front form: Round

OPERATING-/INDICATION PART

Lens colour: Yellow

Lens material: Plastic

Lens illumination: Illuminated

Lens shape: Flush

Lens optics: transparent

Lens type: Raised above front bezel

Symbol: No Symbol

Shape of illumination: Front

MECHANICAL CHARACTERISTICS

Weight: 0.002 kg

CERTIFICATE

REACH: REACH compliant

RoHS: RoHS compliant

OTHER

Short Description: Lens, Ø 19.7 mm, Illuminated, No Symbol, Yellow, Flush, Plastic

Dimension: Ø 19.7 mm

Description component:

Material lens: Plastic as per UL94 V2