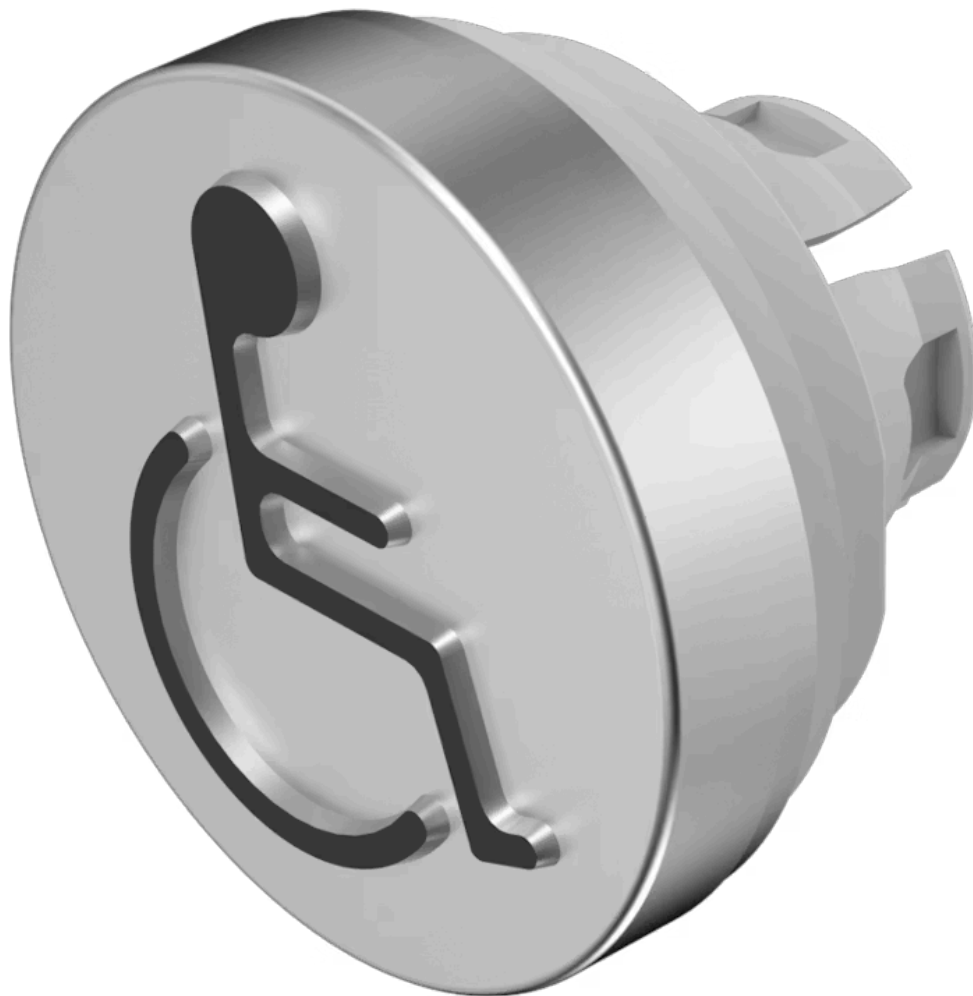


# Lens

84-  
7205.805A



<https://www.eao.com/component/84-7205.805A/en...>

Your product:

---



## 84-7205.805A Lens

### FRONT

**Front form:** Round

### OPERATING-/INDICATION PART

**Lens colour:** Nature

**Lens material:** Aluminium

**Lens illumination:** Non illuminated

**Lens shape:** Flush

**Lens optics:** opaque

**Lens type:** Raised above front bezel

**Symbol:** Wheelchair

### MECHANICAL CHARACTERISTICS

**Weight:** 0.003 kg

### CERTIFICATE

**REACH:** REACH compliant

**RoHS:** RoHS compliant

### OTHER

**Short Description:** Lens, Ø 19.7 mm, Non illuminated, Wheelchair, Nature, Flush, Aluminium

**Dimension:** Ø 19.7 mm

**Hints:** With raised labelling symbol (Door open, Wheelchair, Baby pram), TSI compliant

The colour of anodised aluminium parts can vary due to technical production reasons