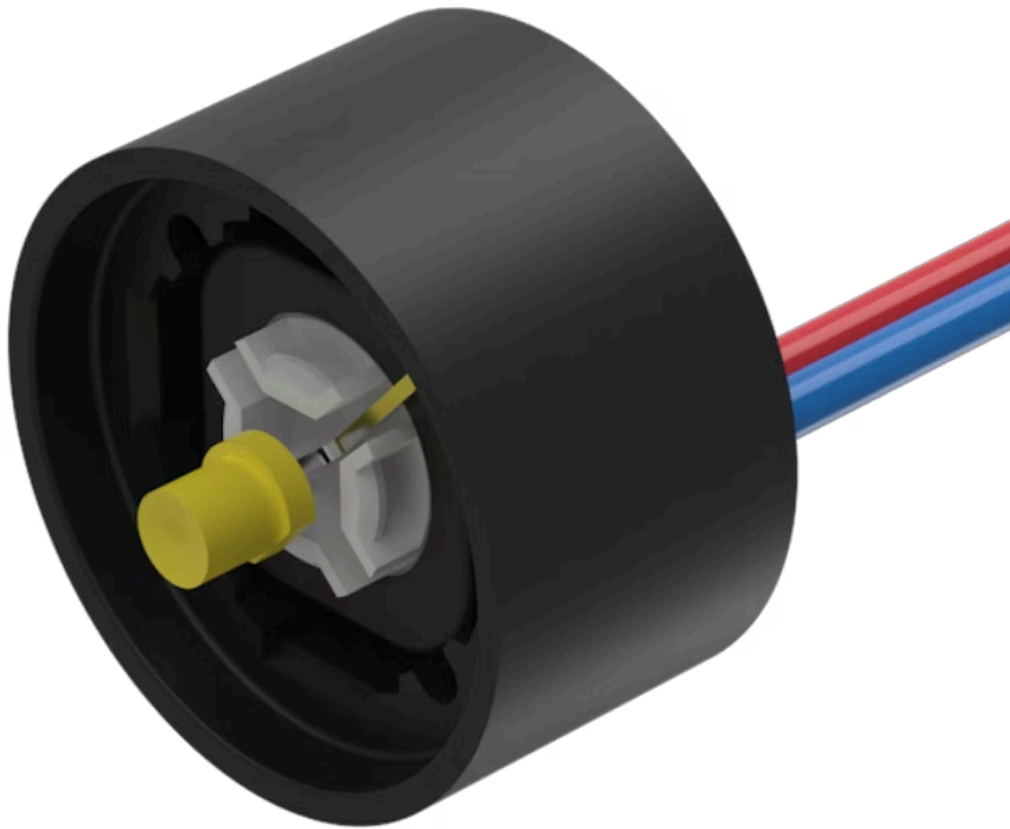


Indicator element

84-8001.4640



<https://www.eao.com/p/84-8001.4640>

Your product:



84-8001.4640

Indicator element

OPERATING-/INDICATION PART

Illumination colour: Yellow

ELECTRICAL CHARACTERISTICS

Operating voltage: 24 V DC $\pm 10\%$

Lumi. Intensity: mcd

MECHANICAL CHARACTERISTIC

Terminal: Flat ribbon cable

Weight: 0.01 kg

AMBIENT CONDITION

IP Protection: IP40

CERTIFICATE

REACH: REACH compliant

RoHS: RoHS compliant

OTHER

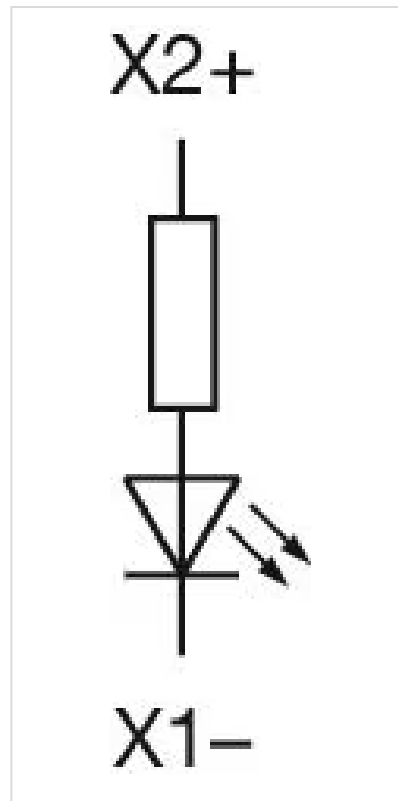
Short Description: Indicator element, Yellow, Single-LED, 24 V DC $\pm 10\%$, Flat ribbon cable

Kind of illumination: Single-LED

Hints: LED and built-in resistor included, Standard version: Cable length 300 mm, Other options on request: Customisation of cable and connectors, rear side fully sealed (IP 67), Protection degree (rear side): IP 40, upgrade to IP 67 with plug Part No. 84-900 possible. With applications where strong vibrations occur, the plugs may

become loose, Luminosity and wave length variations caused by LED manufacturing processes may cause slight differences regarding the illumination. The customer has to decide what resistor shall be used to the LED

Wiring diagrams:



Component layouts:

