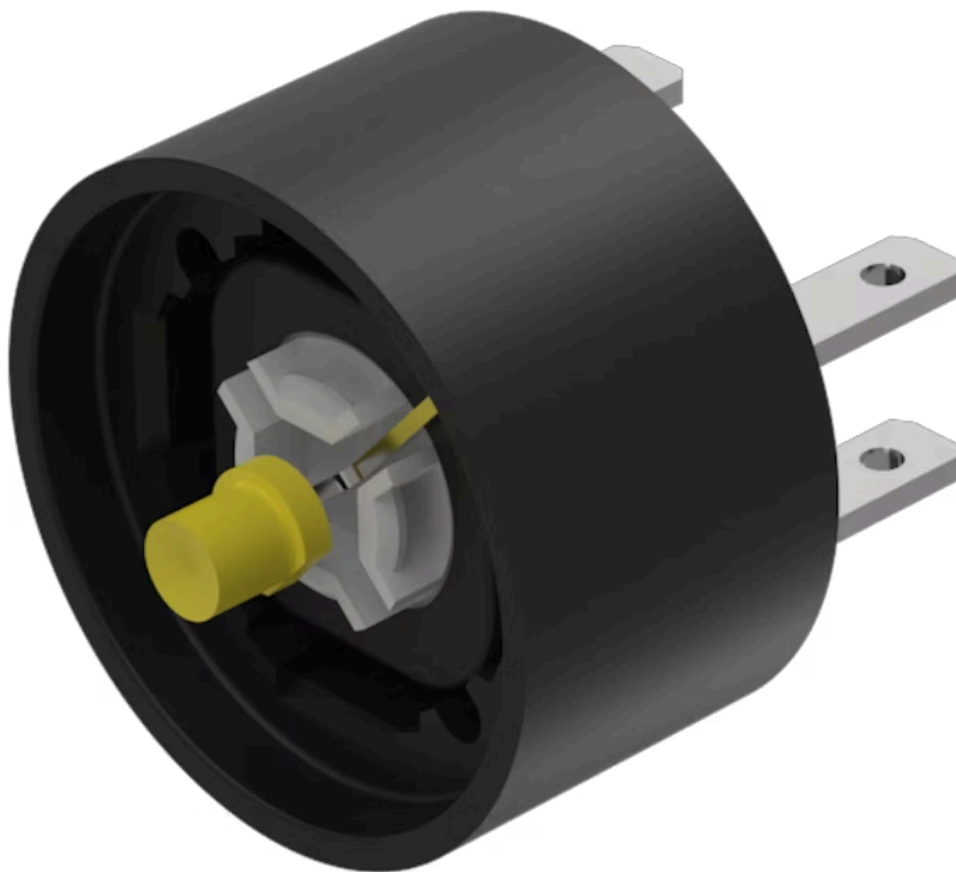


## Switching element

84-8511.4620



<https://www.eao.com/component/84-8511.4620/en/switching-element>

Your product:

---



## 84-8511.4620

### Switching element

#### OPERATING-/INDICATION PART

**Illumination colour:** Yellow

#### ELECTRICAL CHARACTERISTICS

<b>Switching voltage and switching current:</b>	Voltage	42 VAC/DC
	Current	100 mA
	Power	max. 2 W

**Contacts:** 1 NO

**Operating voltage:** 24 V DC  $\pm 10\%$

**Operation current:** 10 mA

**Switching rating:** 42 V AC/DC @ 0,1 A

**Electric strength:** 500 VAC, 50 Hz, 1 minute according to DIN IEC 60512-2

#### MECHANICAL CHARACTERISTICS

**Terminal:** Plug-in terminal, 2.8 x 0.8 mm

**Contact material:** Gold-plated silver

**Switching system:** Short-travel element

**Switching system:** Short-travel snap-action switching system with two independent contact points and tactile operation  
Guarantees reliable switching even of very light loads. Fitted with 1 normally open contact

**Mechanical lifetime:**  $\geq 1$  Mil. cycles of operation

**Operating force:** 4.5 N  $\pm 1$  N (measured at the lens)

**Operating Travel:** ca. 0.5 mm

**Weight:** 0.007 kg

## AMBIENT CONDITION

<b>IP Protection:</b>	IP40 rear side, standard version, IP67 rear side, fully sealed version, with mounted actuator only.
<b>Operating temperature:</b>	– 25 °C ... + 70 °C
<b>Storage temperature:</b>	– 40 °C ... + 85 °C
<b>Shock resistance:</b>	Max. 100 m / s <sup>2</sup> , pulse width, 3-axis (sinusoidal EN IEC 60068-2-27)
<b>Vibration resistance:</b>	Max. 50 m / s <sup>2</sup> from 10 Hz ... 500 Hz, 10 cycles, 3-axis (sinusoidal EN IEC 60068-2-6)

## CERTIFICATE

<b>REACH:</b>	REACH compliant
<b>RoHS:</b>	RoHS compliant

## OTHER

<b>Short Description:</b>	Switching element, Short-travel element, 42 V AC/DC @ 0,1 A, Gold-plated silver, 1 NO, Plug-in terminal, 2.8 x 0.8 mm
<b>Material:</b>	Plastic
<b>Hints:</b>	<p>LED and built-in resistor included</p> <p>Standard version: Cable length 300 mm</p> <p>Other options on request: Customisation of cable and connectors, rear side fully sealed (IP 67)</p> <p>Protection degree (rear side): IP 40, upgrade to IP 67 with plug Part No. 84-900 possible. With applications where strong vibrations occur, the plugs may become loose</p> <p>Luminosity and wave length variations caused by LED manufacturing processes may cause slight differences regarding the illumination. The customer has to decide what resistor shall be used to the LED</p>
<b>Wiring diagrams:</b>	

3

X2+



4

X1-