

# E-stop protective shroud

84-902A



<https://www.eao.com/p/84-902A>

Your product:

---



## 84-902A

### E-stop protective shroud

#### FRONT

**Colour:** Yellow

#### MECHANICAL CHARACTERISTICS

**Weight:** 0.006 kg

#### AMBIENT CONDITION

**IP front protection:** IP65

#### OTHER

**Short Description:** E-stop protective shroud, Ø 50 mm, Plastic, NOT - AUS, Yellow

**Titel Accessory:** E-stop protective shroud

**Dimension:** Ø 50 mm

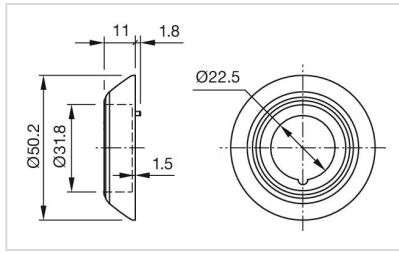
**Material:** Plastic

**Marking:** NOT - AUS

**Hints:**

- Front panel thickness 1 ... 3 mm
- With anti-twist device
- When using a protective shroud the e-stop or stop-switch has to be turned by 180° to be mounted. See dimensional drawing
- The protection shroud Part No. 84-909 is not suitable for a proper use of emergency-stop. It can obstruct a spontaneous operation of the emergency-stop switch
- This shroud Part No. 84-906 is not compliant to EN ISO 13850. There are no restrictions when combined with stop switches.

**Dimension drawings:**



for Part No. 84-902, 84-902A  
84-902B, 84-904C