

Capacitive sensor switch with IO-Link Stainless Steel

84-ADKS-C10-04B0



<https://www.eao.com/p/84-ADKS-C10-04B0>

Your product:



84-ADKS-C10-04B0

Capacitive sensor switch with IO-Link Stainless Steel

FRONT

| | |
|------------------------------|----------------------|
| Front dimension: | Ø 30 mm |
| Front form: | Round |
| Front bezel material: | Stainless steel 316L |

MOUNTING

| | |
|--------------------------|----------------|
| Design: | Flush |
| Mounting cut-out: | Ø 22.5 mm |
| Mounting type: | Panel mounting |

OPERATING-/INDICATION PART

| | |
|---------------------------|-------------|
| Lens material: | Plastic |
| Lens illumination: | Illuminated |
| Lens shape: | Flush |
| Lens optics: | transparent |
| Symbol: | START (C10) |

ELECTRICAL CHARACTERISTICS

| | |
|---------------------------------|-----------------------|
| Operating voltage: | 8.4 - 32 V DC |
| Switching rating: | |
| Communication interface: | IO-Link specification |

MECHANICAL CHARACTERISTIC

Terminal: Connector M12

Switching system: Capacitive

Operating force: No actuating force necessary

Weight: 0.015 kg

AMBIENT CONDITION

IP front protection: IP69K

IK front protection: IK08

Operating temperature: - 30 °C ... + 65 °C

Climate resistance: Relative humidity, max. 95%, non-condensing

CERTIFICATE

Approbations: CSA, EHEDG

Conformities: CE, UKCA

REACH: REACH compliant

RoHS: RoHS compliant

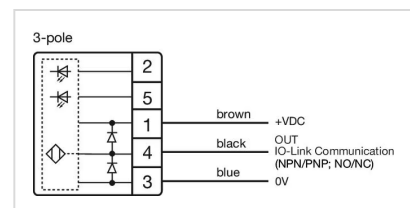
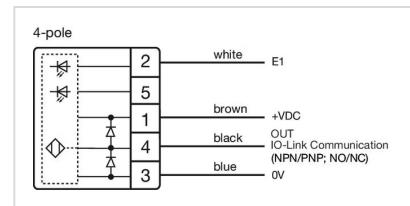
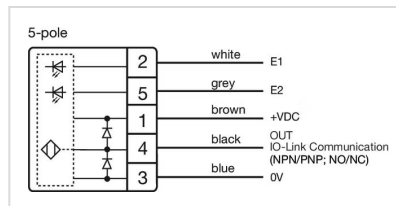
OTHER

Short Description: Capacitive sensor switch with IO-Link Stainless Steel, Ø 22.5 mm, Ø 30 mm, Flush, Illuminated, Plastic, transparent, Round, Stainless steel 316L, Connector M12, IP69K, IK08, START (C10)

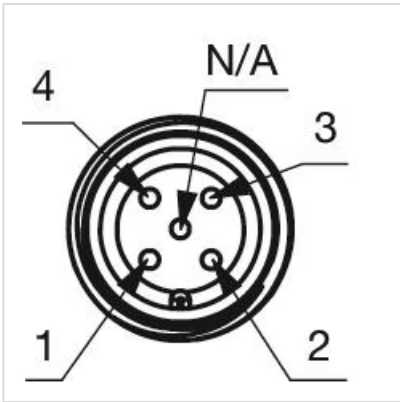
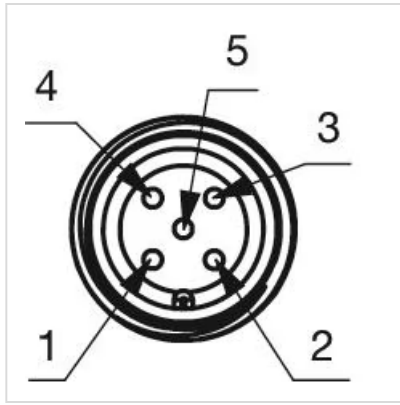
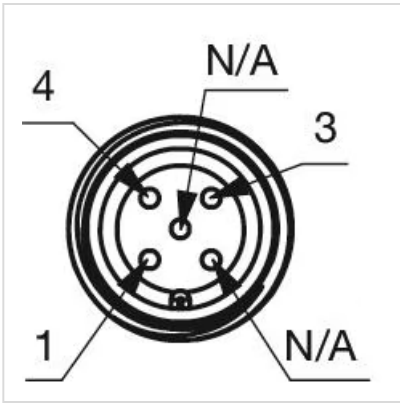
Housing colour: Black

Housing material: Plastic

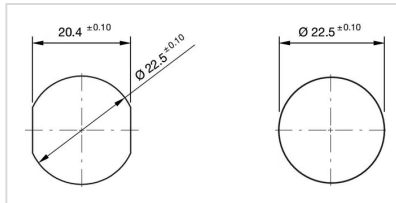
Wiring diagrams:



Component layouts:



Mounting cut-outs:



Dimension drawings:

