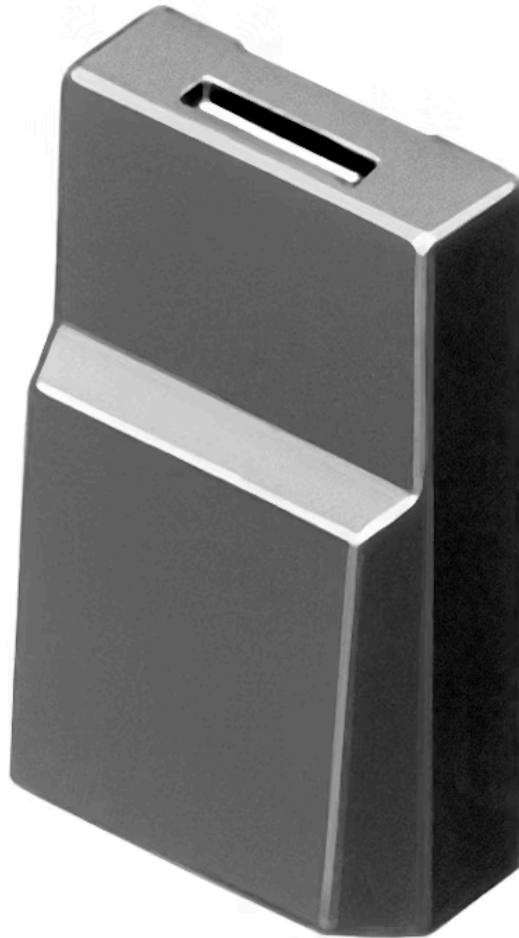


Lens

96-
921.2



<https://www.eao.com/p/96-921.2>

Your product:



96-921.2 Lens

PRODUCT RANGE

Product Status: Phase-out

FRONT

Front form: Rectangular

OPERATING-/INDICATION PART

Lens colour: Red

Lens material: Plastic

Lens illumination: Non illuminated

Lens optics: opaque

Marking symbol shape: none

MECHANICAL CHARACTERISTICS

Weight: 0.001 kg

CERTIFICATE

REACH: REACH compliant

RoHS: RoHS compliant

OTHER

Short Description: Lens, 17.4 mm x 14.8 mm, Non illuminated, Red, Plastic

Dimension: 17.4 mm x 14.8 mm

Colour RAL:

3016 RAL