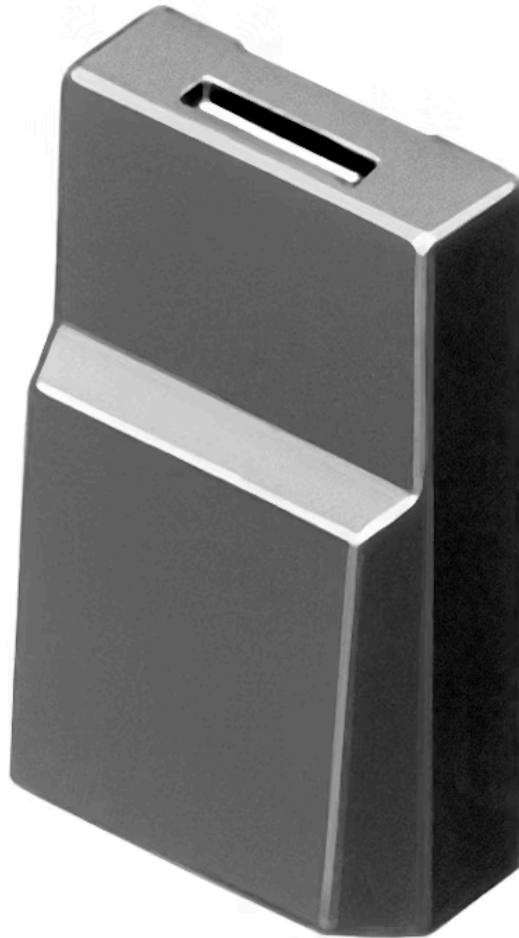


Lens

96-
935.8



<https://www.eao.com/p/96-935.8>

Your product:



96-935.8 Lens

PRODUCT RANGE

Product Status: Phase-out

FRONT

Front form: Square

OPERATING-/INDICATION PART

Lens colour: Grey

Lens material: Plastic

Lens illumination: Non illuminated

Lens optics: opaque

Marking symbol shape: none

MECHANICAL CHARACTERISTICS

Weight: 0.001 kg

CERTIFICATE

REACH: REACH compliant

RoHS: RoHS compliant

OTHER

Short Description: Lens, 17.4 mm x 17.4 mm, Non illuminated, Grey, Plastic

Dimension: 17.4 mm x 17.4 mm

Colour RAL:

7012 RAL