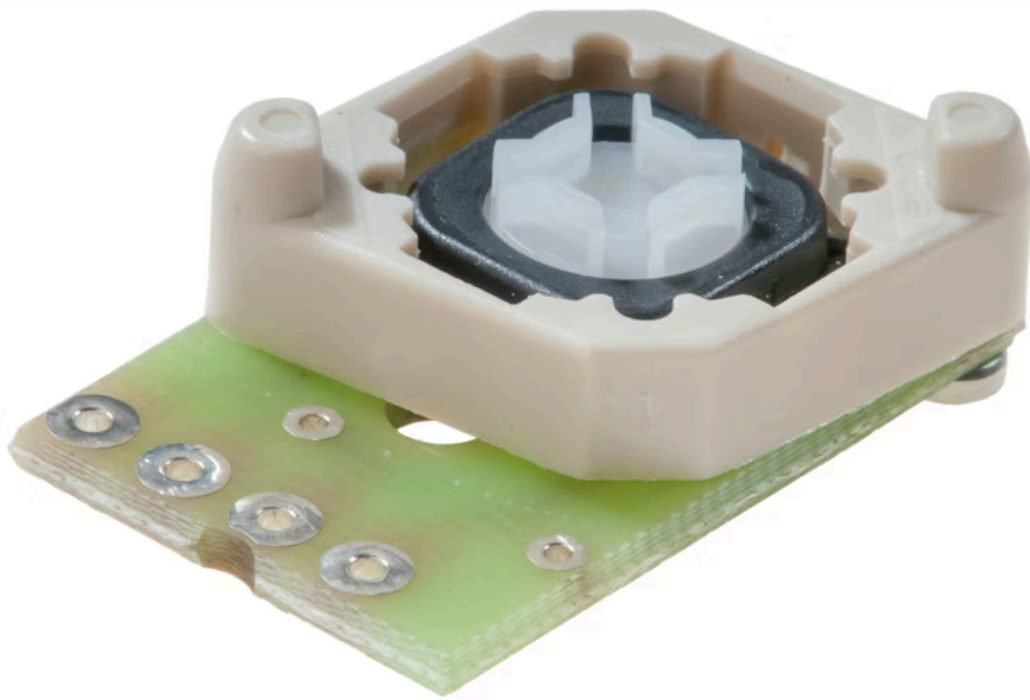


# PCB

92-  
981.0



<https://www.eao.com/component/92-981.0/zh/pcb>

您的产品:

---



## 92-981.0 PCB

### 机械特性

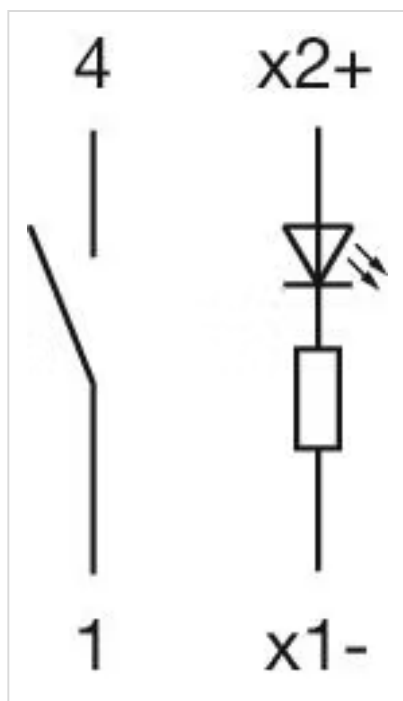
操作力:	2.7 N $\pm$ 1 N (在开关元件上测量)
重量:	0.004 kg

### 证书

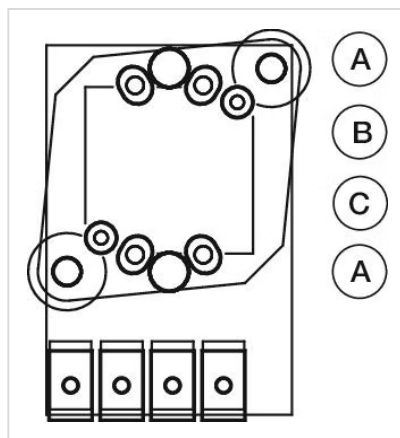
<b>REACH:</b>	REACH compliant
<b>RoHS:</b>	RoHS compliant

### 其他

简述:	PCB
材质:	金属/塑料
接线图:	



组件布局:



A = 4 = 开关  
 B = x+ = LED 阳极 (+)  
 C = 1x- = LED 阴极 (-)