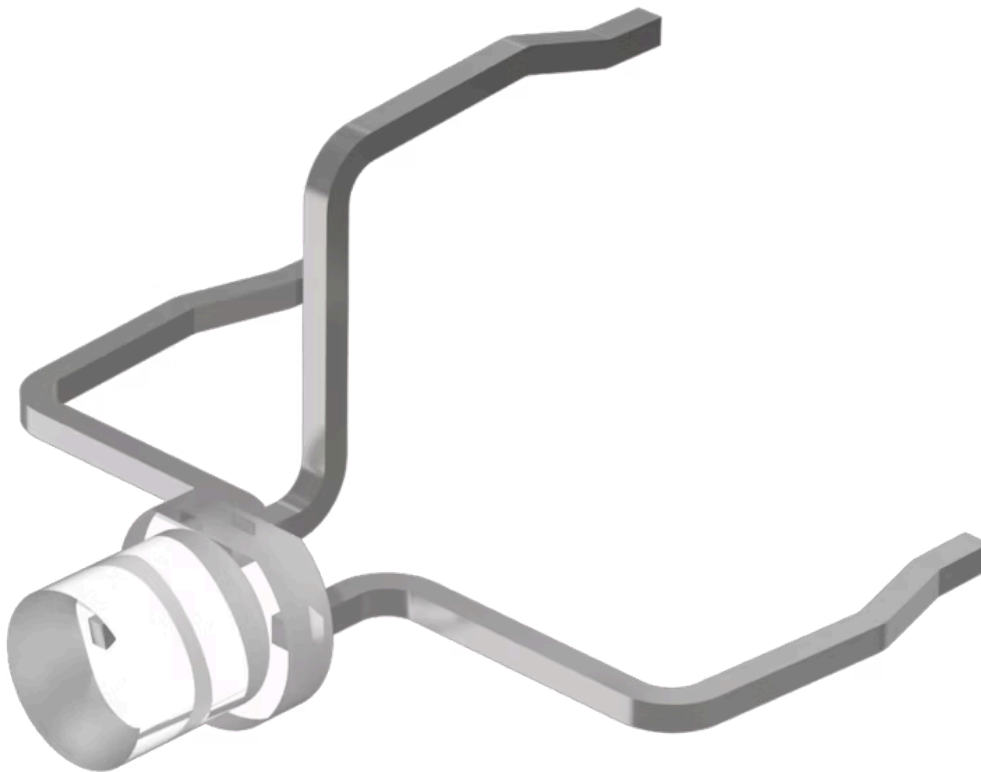


# Single-LED

10-  
2603.320CT



<https://eao.com/p/10-2603.320CT>

Your product:

---



## 10-2603.320CT Single-LED

### OPERATING-/INDICATION PART

**Illumination colour:** Green / Yellow

### ELECTRICAL CHARACTERISTICS

**Operating voltage:** 2 - 6 V DC

**Lumi. Intensity:** 1100/900 mcd

### MECHANICAL CHARATERISTIC

**Weight:** 0.001 kg

### CERTIFICATE

**REACH:** REACH compliant

**RoHS:** RoHS compliant

### OTHER

**Short Description:** Single-LED, T1 Bi-Pin, Green / Yellow, 2 - 6 V DC

**Kind of illumination:** Bi-colour-LED

**Hints:** The customer has to decide what series resistor shall be used to the LED, Luminosity and wave length variations caused by LED manufacturing processes may cause slight differences regarding the illumination. The customer has to decide what resistor shall be used to the LED

**Wiring diagrams:**

X3+ X1- X2+

