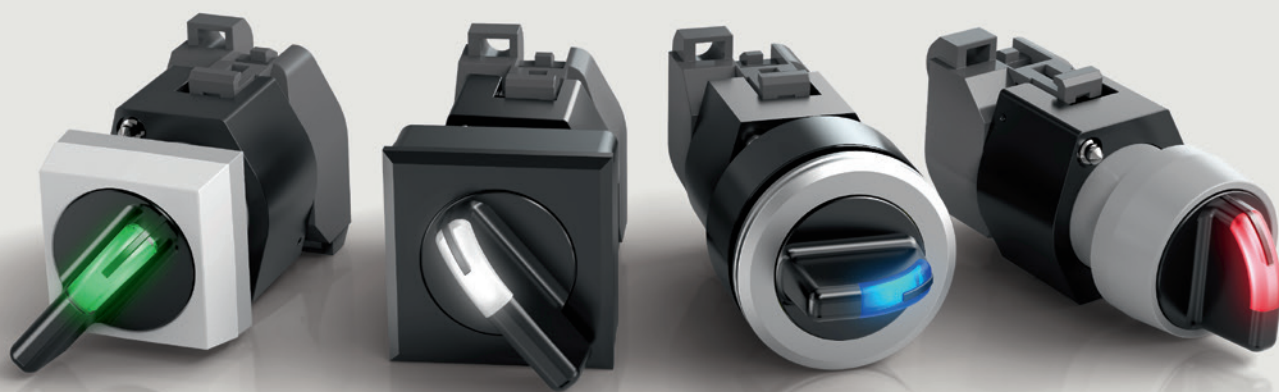


Series

04

Illuminated selector switch.

www.eao.com



Series 04

Illuminated selector switch.

Modern, illuminated selector switch with excellent tactile feedback and a long service life – for intuitive operation and additional measures of safety in public transportation applications.

Public transportation today needs easy to use, modern actuators and indicators. EAO, the expert partner for Human Machine Interfaces (HMIs), offers tactile, long-lasting illuminated selector switches that are ideal for the challenging conditions often found within transportation applications. With single or bi-colour illumination, these Series 04 illuminated selector switches enhance operating safety in the driver's cab and on the control panel by way of intuitively quick, visual recognition.

Series 04 selector switches offer excellent, positive, and robust tactile feedback. Thanks to their rugged and modular design, these reliable devices have a long service life of up to 2.5 million switching cycles and feature high IP65 protection thus making them extremely versatile in use.

Bright LED illumination is clearly visible in daytime scenarios that feature strong sunlight as well as other low-light conditions. The easily identifiable switch positions also enable safe and intuitive operation. Combined with EAO Value Added Services that can include panel fitting, wiring assemblies and marking capabilities, easy installation and intuitive operation are possible for just about any application offered.

These actuators are available in round or square shapes and with raised or flush designs. They also offer the option of a short or long lever. Optional illumination in red, green, blue, yellow or white is offered, and all colour variants are available with operating voltages of 6VDC to 230 VAC.

These illuminated selector switches are based on the reliable switching technology of the proven Series 04, which offers the following end user benefits:

- Industry standard mounting for new designs or retrofit applications
- A choice of two or three switching positions
- Actions of momentary, maintained, or combinations of the two
- Can be combined with all proven Series 04 switching elements
- Snap action, momentary action and rotary switching elements available
- Support for up to three switching element (six contacts)
- The option to have more than three switching positions (not for illuminated variants and only contacts with screw terminal)
- Screw, plug, double plug and push-in terminal contacts
- Optional sealed protective covers for added security against accidental and unauthorised operation
- Optional hole for sealing of long lever

The user-friendly, ergonomically designed selector switch along with its rounded edges are consistent with the DIN 5566-1 standard (non-illuminated version with low back panel depth also available).

Advantages.

- Bright, single or bi-colour LED illumination
- Modern design with rounded edges (in accordance with DIN 5566-1)
- Excellent tactile feedback
- Long service life and robust construction (IP65)
- Wide range of possible combinations and options

Typical applications

- Driver's cab
- Control units
- Control cabinets

Mechanical characteristics

- Mechanical life
 - Momentary action: 2.5 million cycles of operation
 - Maintained action: 1.25 million cycles of operation
- Torque
 - 0.12 Nm to 0.25 Nm (with switching element), depending on the switching position type

Degree of protection

- IP65 front protection

Ambient conditions

- Temperature
 - Storage temperature -40°C to $+85^{\circ}\text{C}$
 - Operating temperature -40°C to $+55^{\circ}\text{C}$

Electrical characteristics

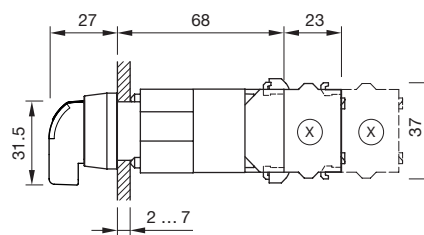
Please refer to the Series 04 product catalogue for the selector switch's electrical characteristics.

Standard

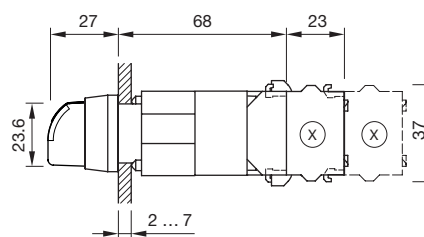
Rounded edges in accordance with DIN 5566-1 (Rail Vehicles/Driver Cabs – Part 1: General Requirements)

Dimensions

Flush design/long lever

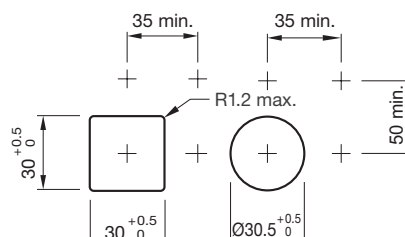


Raised design/short lever

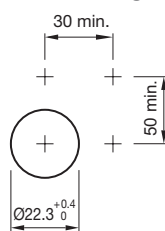


Mounting cut-outs

Flush design



Raised design



All dimensions in mm.

EAO Contact.

Your centre of excellence.

Headquarters

EAO Holding AG
Tannwaldstrasse 88
CH-4600 Olten
Telephone +41 62 286 92 00
info@eao.com

Manufacturing Companies

Switzerland
EAO AG
Tannwaldstrasse 88
CH-4600 Olten
Telephone +41 62 286 91 11
info@eao.com

EAO Systems AG
Tannwaldstrasse 88
CH-4600 Olten
Telephone +41 62 286 91 11
sales.esy@eao.com

China
EAO (Guangzhou) Ltd.
3/F, Block G4, South China
New Materials Innovation Park
31 Kefeng Road
Guangzhou Science City
CN-Guangzhou, PRC
Telephone +86 20 3229 0390
sales.ecn@eao.com

Germany
EAO Automotive GmbH & Co. KG
Richard-Wagner-Straße 3
DE-08209 Auerbach/Vogtland
Telephone +49 3744 8264 0
sales.esa@eao.com

North America
EAO Corporation
One Parrott Drive
Shelton
US-CT 06484
Telephone +1 203 951 4600
sales.eus@eao.com

Sales Companies

China
EAO (Guangzhou) Ltd.
3/F, Block G4, South China
New Materials Innovation Park
31 Kefeng Road
Guangzhou Science City
CN-Guangzhou, PRC
Telephone +86 20 3229 0390
sales.ecn@eao.com

EAO (Shanghai) Office
Rm.401, Lihpao Plaza,
NO.159 Shenwu Road,
Minhang District,
CN-Shanghai, 201106.
PRC
Telephone +86 21 6095 0717
sales.ecn@eao.com

France
EAO France SAS
Nextdoor – Bâtiment Silex
15 rue des Cuirassiers
CS 33821
FR-69487 Lyon Cedex O3
Telephone +33 9 74 18 93 41
sales.efr@eao.com

**Germany, Austria, Czech Republic,
Poland, Slovakia**
EAO GmbH
Langenberger Straße 570
DE-45277 Essen
Telephone +49 201 8587 0
sales.ede@eao.com

Hong Kong (Asia Pacific)
EAO (Far East) Ltd.
Unit A1, 1/F, Block A
Tin On Industrial Building
777 Cheung Sha Wan Road
Lai Chi Kok, Kln
HK-Hong Kong
Telephone +852 27 86 91 41
sales.ehk@eao.com

Italy
EAO Italia S.r.l.
Centro Direzionale Summit –
Palazzo D1
Via Brescia 28
IT-20063 Cernusco sul Naviglio (MI)
Telephone +39 029 247 0722
sales.eit@eao.com

Japan
EAO Japan Co. Ltd.
Net 1 Mita Bldg. 3F
3-1-4 Mita Minato-ku
JP-Tokyo 108-0073
Telephone +81 3 5444 5411
sales.ejp@eao.com

Netherlands, Belgium
EAO Benelux B.V.
Kamerlingh Onnesweg 46
NL-3316 GL Dordrecht
Telephone +31 78 653 17 00
sales.enl@eao.com

North America
EAO Corporation
One Parrott Drive
Shelton
US-CT 06484
Telephone +1 203 951 4600
sales.eus@eao.com

Switzerland
EAO Schweiz AG
Tannwaldstrasse 86
CH-4600 Olten
Telephone +41 62 286 95 00
sales.ech@eao.com

**United Kingdom, Denmark,
Finland, Ireland, Norway, Sweden**
EAO Ltd.
Highland House
Albert Drive
Burgess Hill
GB-West Sussex RH15 9TN
Telephone +44 1444 236 000
sales.euk@eao.com